

Let God Arise

Words and Music by
Chris Tomlin, Ed Cash and Jesse Reeves

♩ = 144

Unison

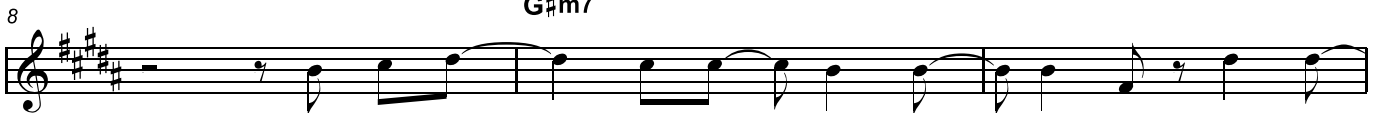
B7



1. Hear the ho - ly roar of God re - sound,
(2. His en) - e - mies will run for sure,



watch the wa - ters part be - fore us now.
the Church will stand, she will en - dure.



Come and see what He has done for us, & tell
He holds the keys of life, our Lord, death has



the world of His great love. Our God
no sting, no fi - nal word. Our God



is a God who saves. Our God



is a God who saves. Let God a - rise,



Let God Arise - 2

21 **B** **E/B**

let God a - rise. Our God reigns

25 **B7** **E/B**

now and for - ev - er, He reigns now and for - ev - er.

29 **A** **B7** **E** **A** **B7** **E** *Unison*

2. His en -

33 **B**

er. God a - rise, let God a - rise.

Let God Arise - 3

36 **E/B** **B7**

Our God reigns now and for - ev -

39 **E/B**

er, He reigns now and for - ev - er.

42 **E** **G#m7** **F#**

46 **E** **G#m7** **F#** **Unison**

Our God

Let God Arise - 4

50 **E** **G#m7** **F#** 1 2

is a God who saves. Our God Our God

55 **E** **G#m7** **F#** 1

is a God who saves. Our God

59 **Harmony** **B** 2

Let God a - rise, let God a - rise.

62 **E/B** **B7**

Our God reigns now and for - ev -

65 **E/B** 1

er, He reigns now and for - ev - er. God a - rise

Let God Arise - 5

68

2

A B7 E repeat 3 times B

er.

The image shows a musical score for the hymn 'Let God Arise - 5'. It consists of two staves: a treble clef staff on top and a bass clef staff on the bottom. The key signature is three sharps (F#, C#, G#). The score begins at measure 68. A first ending bracket labeled '2' spans the first two measures of the treble staff. The treble staff contains a melody with a repeat sign (double bar line with two dots) after the second measure. The bass staff provides a harmonic accompaniment. Above the treble staff, the chords A, B7, E, and B are indicated. The E chord is followed by the instruction 'repeat 3 times'. The word 'er.' is written below the treble staff in the first measure.